



## **Promotional Floor Mats**

- Residential / Real Estate**
- Commercial**
- Retail**
- Safety**



# Promotional Floor Mats Available:

- Bar Mats - Custom Mold
- Defender Inlay
- Dirt Stopper
- Direct Print
- Dye Syblimation
- Rubber Duramat
- Flocked Olefin
- Flock Camelot
- Flock Diamondback
- Flocked Faux Coir
- Flocked Coco Brush
- Flocked Front Runner
- mBossed Eversoft
- Molded Floor Mats
- HD Nylon Dye Twist
- Nylon Dye Plush



## Things to Consider Before Choosing A Mat:

### 1. Where will the mat be placed?

- Outdoors
- Covered Outdoors
- Indoors

### 2. How will the mat be used?

- Entrance
- POP / Display
- Counter
- Fatigue Reducing

### 3. What does the artwork look like?

- Spot-Color(s)
- Full Color (with or with Picture)



**CET**  
Production Inc.

T: 604-270-0318 F: 604-270-3210 E: [cet@cetproductions.bc.ca](mailto:cet@cetproductions.bc.ca)  
#112, 11786 River Road, Richmond, BC [www.cetproductions.bc.ca](http://www.cetproductions.bc.ca)

# RESIDENTIAL MATS

# MAKE AN ENTRANCE!

## BENEFITS:

- Protects carpet & hardwoods
- Promotes brands
- Inexpensive gifts



## WHO ELSE USES PROMO MATTING?



AVON

MARY KAY®



Metro  
Atlanta  
Chamber



PATRIOTS  
\*\*\*\*\* IN \*\*\*\*\*  
RESIDENCE

(Bill O'Reilly Show)

laugh.dance.welcome

(The Ellen Show)



## Apartments



## Online Stores



## Realtors



## Fundraising



## OTHER USES:

- Condos/Timeshares/RV's
- Direct Sale Home Parties
- Giveaways (Chamber of Commerce, (Travel Agents, Season Ticket Holders)
- Cruise Ship or Highrise Balconies
- Fundraising (Churches, Youth Sports, Non-profits)

Contact us for more information:



T: 604-270-0318 F: 604-270-3210

E: [cet@cetproductions.bc.ca](mailto:cet@cetproductions.bc.ca)

#112, 11786 River Road, Richmond, BC

[www.cetproductions.bc.ca](http://www.cetproductions.bc.ca)

# COMMERCIAL MATS

# MAKE AN ENTRANCE!



## BENEFITS:

- Presents a uniform appearance
- Reduces risk of slips & falls
- Protects flooring from dirt & moisture
- Improves brand awareness

## WHO ELSE USES PROMO MATTING?

State Farm



Allstate  
There's no good hands.

GNC



Little Caesars

Carrier



LENNOX



jiffy lube



## Retailers



## Franchises



## Dealer/Distributors



## Banks



## OTHER USES:

- Safety Messages
- Restaurants/Bars
- Airlines/Auto Rentals (VIP customer ques)

Contact us for more information:

**CET**  
 Production Inc.

T: 604-270-0318 F: 604-270-3210

E: [cet@cetproductions.bc.ca](mailto:cet@cetproductions.bc.ca)

#112, 11786 River Road, Richmond, BC

[www.cetproductions.bc.ca](http://www.cetproductions.bc.ca)

RETAIL/POP  
MATS

# INDOOR BILLBOARDS!

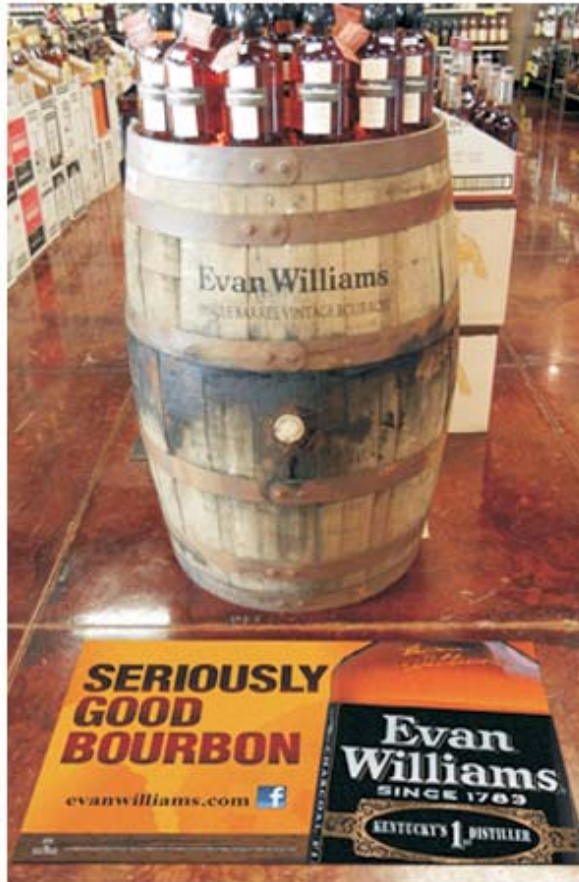


- No other competition on the floor
- Increases product sales by over 17%\*
- Lowest advertising cost per exposure

## WHO ELSE USES PROMO MATTING?



## Instore Displays



## Product Promotions



## Point of Purchase



## OTHER USES:

- Entrances (keeps floors clean & safe)
- Instore product demonstrations
- Promote beverages in Bars/Restaurants
- Anti-Fatigue mats (at counters)

\* Source: POPAI

Contact us for more information:

**CET**  
Production Inc.

T: 604-270-0318 F: 604-270-3210

E: [cet@cetproductions.bc.ca](mailto:cet@cetproductions.bc.ca)

#112, 11786 River Road, Richmond, BC

[www.cetproductions.bc.ca](http://www.cetproductions.bc.ca)

# PREVENT WORKPLACE INJURIES WITH SAFETY MATS



## THE FACTS

- **85%** of all Worker's compensation claims are from slip & fall accidents
- Compensation and medical costs total over **\$70 billion** annually
- **22%** of claims result in more than **30 days** away from work
- Litigation costs can exceed **\$12,000**

Sources: National Safety Council and US Bureau of Labor Statistics

## Top Slip & Fall Causes



## A few of our mat solutions



**CET**  
Production Inc.

T: 604-270-0318 F: 604-270-3210 E: [cet@cetproductions.bc.ca](mailto:cet@cetproductions.bc.ca)  
#112, 11786 River Road, Richmond, BC [www.cetproductions.bc.ca](http://www.cetproductions.bc.ca)